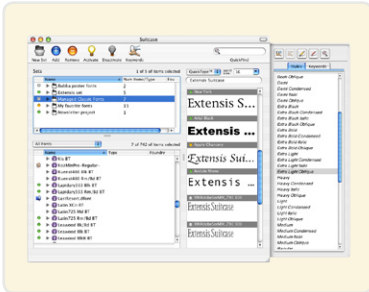


Suitcase Server



Extensis Suitcase Server: Font management for workgroups

The design, print and publishing communities face many challenges with managing fonts in their workgroups. Suitcase Server was designed to directly address these issues and enable the next stage of evolution in font management. Extensis font management tools enable workgroups to successfully manage their fonts in a variety of workflows and settings.

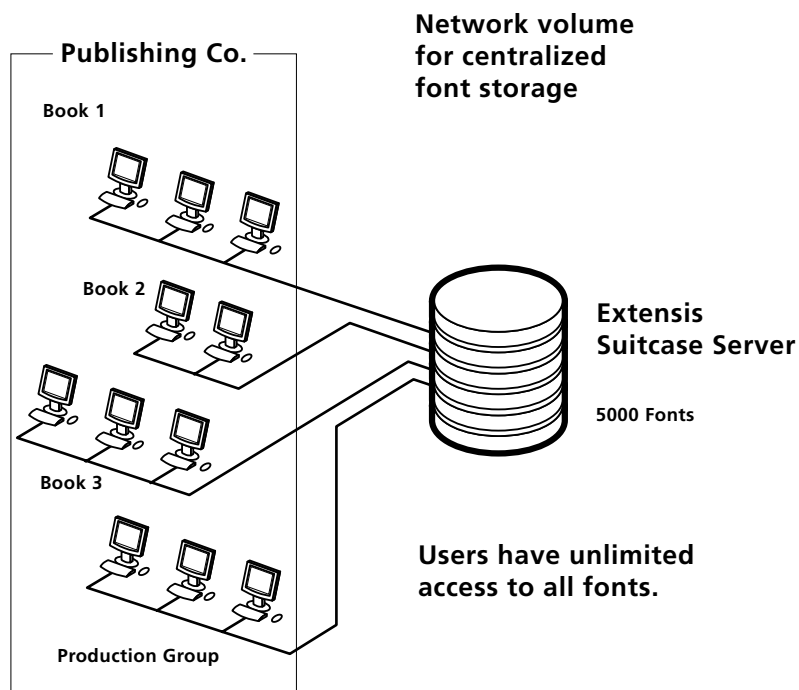
The Problem: Managing fonts for workgroups

A significant challenge facing systems administrators today is managing fonts for their workgroups. Ensuring consistent font usage through an entire workflow of several departments can be a daunting task. Add to that the responsibility of maintaining compliance with various font licenses and the task becomes next to impossible to manage successfully.

To illustrate the problem, let's examine a common workflow scenario involving a publishing company that publishes several books. Each book has its own unique set of fonts to accommodate the book's individual look and feel. For each book, there are different groups involved in the publishing process (an Editorial Group, a Design & Layout Group and a Production Group). Therefore, it is critical that during each phase of the workflow, each workgroup has access to the same set of fonts for that particular project. Say one group accidentally uses fonts that were licensed specifically for another book. At best, the book may have reflow problems and work on that publication can come to a standstill while the problem

is resolved. At worst, the incorrect font is used and the font license agreement is violated thus exposing the publisher to various legal ramifications.

In the past, systems administrators may have simply placed licensed fonts on a network volume. To work on their project, workgroup members would then have complete and unchecked access to copy the fonts from the network location to their desktops, or to activate the fonts across the network.



There are several problems with this type of workflow. First, administrators have no way of successfully tracking font usage to guarantee font license compliance. Second, when administrators update their fonts (replacing Linotype's Helvetica with Adobe's Helvetica for example) they have no way of knowing for sure that all of the members of a particular workgroup are using the correct (updated) version of the font. Third, administrators cannot be certain that the correct font is being used for any particular project. Finally, activating fonts across a network can compromise your workflow. Even with today's robust systems and servers, networks can and do go down. If you activate your fonts across a network, you will lose access to those fonts during a network outage bringing your entire workflow to a standstill.

**The Solution:
Extensis Suitcase & Suitcase Server**

Suitcase has been solving the font management needs of individual users since the early days of the Macintosh. Extensis was the first to develop a cross-platform, server-based font management solution, Suitcase Server. This product allows administrators to keep all of their fonts, both Macintosh and Windows fonts, in one central location, ensuring that all members of a workgroup are using the same sets of fonts. Macintosh and Windows users alike, can connect to Suitcase Server and subscribe to Server-based font sets.

Used in conjunction with Suitcase Server, the Suitcase application (for both Mac and Windows) provides users with the ability to activate and deactivate fonts as needed. Designers, editors and production users can subscribe to the font sets they need. Suitcase supports PostScript Type 1, TrueType, Data Fork Fonts (dfont), Windows TrueType as well as OpenType fonts. OpenType font support on both the Macintosh and Windows platforms allows for a seamless workflow through an organization that utilizes both operating systems.

Through auto-activation support, Suitcase makes it easier than ever to activate your fonts. Whether you are using QuarkXPress or Adobe Illustrator, Suitcase automatically activates the fonts you need, when you need them. Suitcase uses Apple's FontSync™ technology to ensure that the exact font used to create a document is activated the next time you open the document.

Auto-activation demonstrates the true value of font management by taking the work and responsibility of activating fonts off the plate of users and administrators. This function is completely automated so users no longer have to worry about having the right fonts at the right time.

**The Evolution:
Extensis Suitcase Server - font management for workgroups**

Like most things, the font management needs of administrators and users change and evolve over time. Now more than ever, administrators need additional control over how the fonts they have licensed are distributed among the various workgroups in their organization. At the same time, they need tools that allow for remote administration and continued ease of use. Suitcase Server is set to evolve with these needs in order to continue to solve the problem of font management for workgroups.

**Extensis Suitcase Server:
How it works**

Suitcase Server takes advantage of the same proprietary database created for Extensis Portfolio Server. This proven technology allows Suitcase Server to be more scalable and flexible than ever before. Suitcase Server was created to run in both Macintosh and Windows server environments. In addition, both Macintosh and Windows clients can connect to Suitcase Server over TCP/IP, making cross-platform and remote use easier than ever.

Adding fonts & creating sets

Adding fonts to Suitcase Server is the first step in the process of managing fonts for a workgroup. Administrators no longer need direct access to the Suitcase Server to perform administrative functions. Fonts can be added remotely from any copy of Suitcase. Additionally, administrators can create their Server-based font sets locally and then upload them to Suitcase Server using the same user-friendly, intuitive Suitcase user interface.

Users & groups

Administrators can easily create users on the Suitcase Server and then assign them to specific groups. For example, there may be 20 users in the Editorial group, 10 users in the Design & Layout group and 5 users in the Production group. Each group has a specific set of fonts that they can see that users in other groups cannot see or have access to.

For example, the Editorial group may only have access to a small subset of an organization's font library while the Design & Layout group has access to a larger subset and the Production group has access to all of the fonts in the organization's library.

Administrators have additional flexibility with users and groups in that font sets can either be made mandatory (requiring users to download the font sets) or they can be made as optional. If a font set is optional, users in any given workgroup have the option to subscribe to the font set whereas if the font set is marked as mandatory, Suitcase automatically downloads the font set when the user connects to the Suitcase Server.

Font license administration

Managing font license compliance for a large organization can become very difficult requiring administrators to create custom spreadsheets that can become complex and cumbersome. With Suitcase Server, administrators can simply select a font and enter the number of licenses that they own. As fonts are assigned to users and groups, Suitcase Server continually checks to make sure that the number of users granted access to the fonts does not exceed the font license entered by the administrator. In the event a font license is exceeded, Suitcase alerts the administrator of the potential violation.

Tight administrative control

Suitcase Server gives administrators the option of “locking down” options in connected Suitcase Client systems. Administrators can control whether users can add local fonts onto their machine, activate or deactivate required fonts, add keywords, override system fonts, and more. Settings are defined on a per-user basis, allowing flexibility based on each user’s needs. This tight level of control allows administrators to keep rogue fonts from being introduced, and ensures the highest level of compliance from users.

Remote administration & use

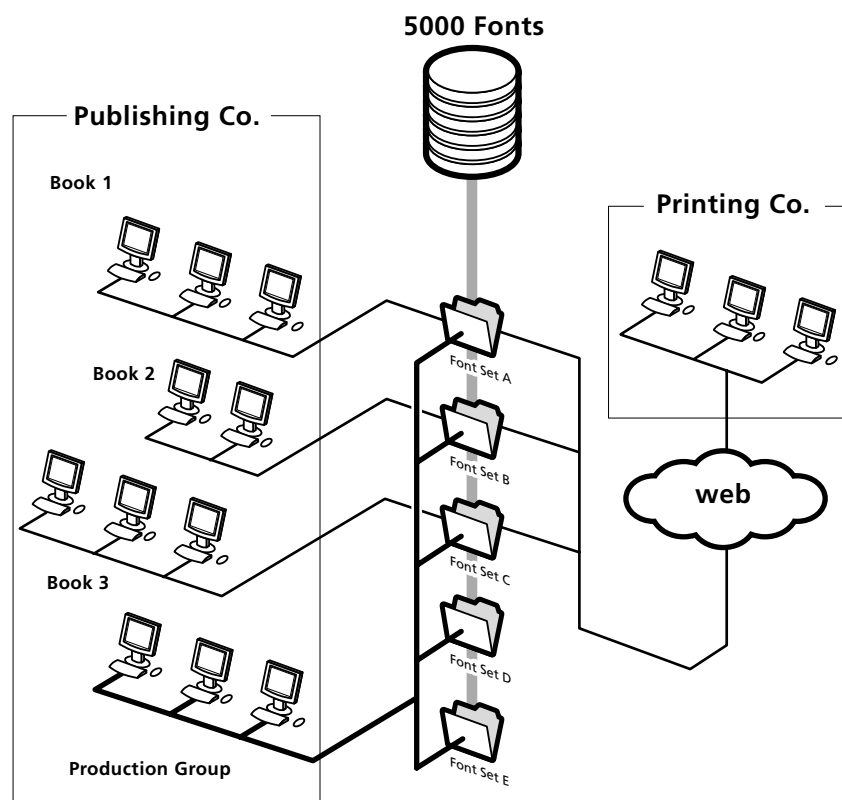
Since Suitcase Server utilizes TCP/IP, administrators can remotely administer the Server whenever they need to. Administrative changes to groups or sets are easily performed without needing direct access to the server.

Additionally, workgroup members using Suitcase outside of the organization’s physical office can connect to Suitcase Server over the Internet, allowing laptop users and external contractors access to the same set of fonts as the users in the local office.

Extensis Suitcase Server: A Work Flow Example

Let's revisit the workflow scenario of a publishing company with several titles. In the example, a publishing company has several books being worked on by several groups. The key to successfully managing fonts for all of the workgroups is to make sure that each group uses the correct fonts while maintaining compliance with each font's specific license.

Extensis Suitcase Server



With Suitcase Server, the systems administrator can create users and place them into logical groups. Next, the administrator can assign font sets to these groups based on the books or projects that they are working on. Suitcase Server's font licensing functionality alerts the administrator if the number of users in a group exceeds the number of licenses to which a font has been assigned.

When sets are assigned to groups, the administrator can choose to make the set mandatory or optional. If mandatory, the font set is automatically downloaded to the user's computer when they connect to Suitcase Server. If the set is optional, users can subscribe to the font set and unsubscribe when they are finished using the fonts. In either case, if the administrator makes a change to a server font set (adds or removes a font for example), the change is reflected on each user's workstation when they synchronize with the Suitcase Server. The synchronization interval can be set by the user.

Since the fonts are downloaded to the user's computer, there's no need to worry about network problems disrupting the workflow. Fonts are activated locally and are always available until the set is no longer assigned to a group. In the event that an external party (such as a remote office or a printing company) needs access to the Suitcase Server, they can connect via TCP/IP and will have access to the fonts and sets as designated by the administrator.

When connecting to the Suitcase Server, either from within the organization or from an external location, users only have access to the fonts and sets as determined by the administrator. Any other fonts or data residing on a computer running the Suitcase Server are secure from unauthorized users.