

Workgroup Digital Asset Management

Extensis
Portfolio 8.5 SERVER

Every company faces challenges managing their digital assets. While creative and marketing teams represent the “front lines” in this battle, the impact of digital asset management reaches far wider. The sales team, for instance, may need access to the latest approved presentations, product images, logos, supporting documentation, etc. An event vendor may need access to booth designs, graphics, collateral, etc. There are multiple channels internally and externally that interact with your company’s digital assets on a daily basis.

This is where Portfolio Server comes in. Portfolio Server provides powerful, flexible digital asset management that supports the multiple channels within your organization. Portfolio Server’s power comes from AutoSync, the engine that automatically keeps all asset information updated and synchronized. This fuels Portfolio Server’s ability to automate much of the cataloging, metadata extraction, sorting and distribution processes. Portfolio Server’s flexibility comes from its large range of configurable options and the various access points it supports. These access points—from seamless integration with Adobe Creative Suite 3 to Portfolio NetPublish-powered websites—make it easy for your organization’s multiple channels to access the assets they need when, where and how they need them.

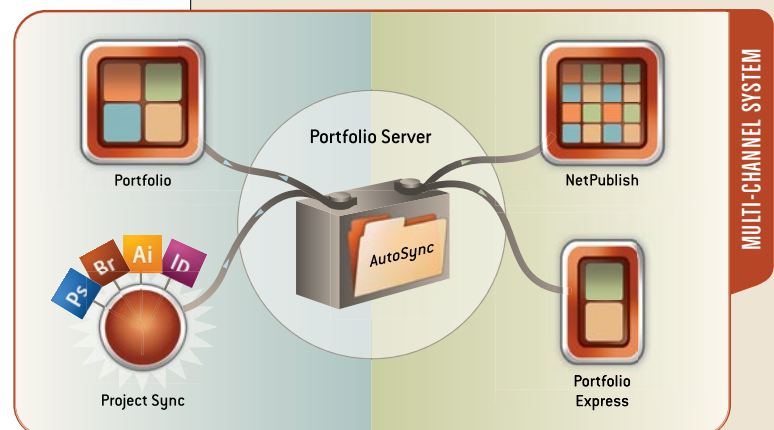
TOP REASONS You Need Portfolio Server

- 1** Automates organization, tracking and distribution of digital assets with AutoSync
- 2** Seamless ‘Front End’ integration with Adobe® Creative Suite® 3
- 3** Seamless ‘Back End’ integration with SQL databases via SQL Connect™
- 4** Multi-channel distribution options including dynamic web publishing via NetPublish™
- 5** Hassle-free ingestion, keywording and metadata extraction
- 6** Ease of deployment within cross-platform environments

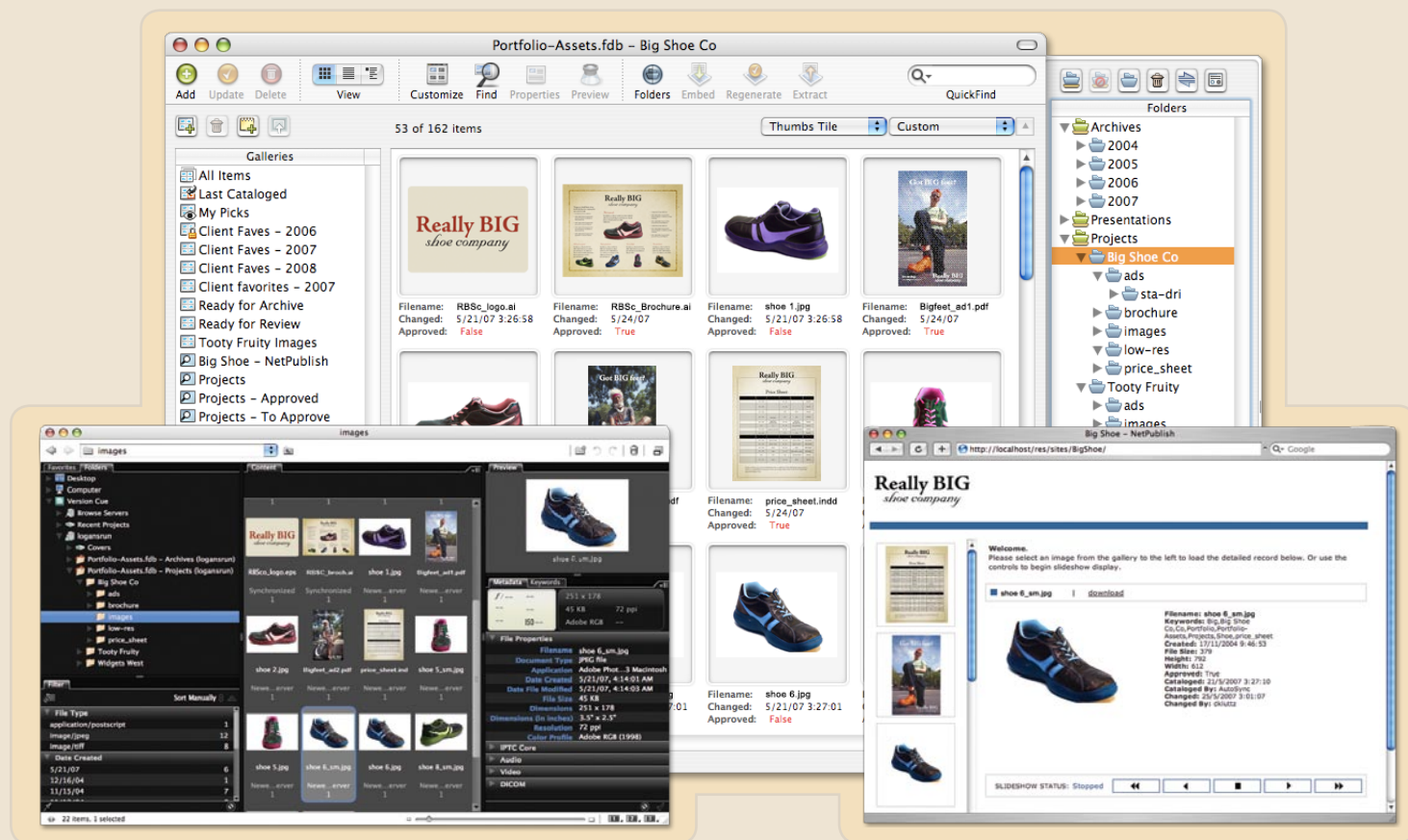
Portfolio Project Sync™ for Adobe Creative Suite 3

Creatives aren’t librarians, nor do they want to be. Yet your creative team, as digital asset creators, plays a key role in managing your company’s digital assets. So, Portfolio Server comes ready with Project Sync for Adobe Creative Suite 3.

Developed in close partnership with Adobe, Project Sync allows any workgroup—using a Creative Suite workflow—to tap into the power of Portfolio Server without leaving the Creative Suite environment. Seamless integration, supported by Project Sync, means your creative workgroup can search, access, even catalog and tag assets, using their CS3 applications of choice. Additionally, since Portfolio Server is a multi-channel system, assets altered or added by CS3 users are accessible instantly to users outside of the creative workgroup via a NetPublish-powered website, via the cross-platform Portfolio Client or Portfolio Express (included with Portfolio client).



Extensis Portfolio 8.5 SERVER



MINIMUM SYSTEM REQUIREMENTS

Macintosh

- Mac OS X 10.4.4 (Including Mac OS X Server)
- 1 GHz or faster G4, G5 or Intel Core processor(s)
- 512MB available RAM
- 500MB hard drive space
(Additional space required for database and asset storage)
- 1024x768 or larger display
- Network interface
- Apple QuickTime v7 or higher
- Adobe Version Cue Server v3.1 (For Project Sync Support)
- Microsoft Office X 10.1.9 or higher (For advanced Office support)

SQL Connect

- Windows: Oracle 10gR2
- Windows: Microsoft SQL Server 2000 SP4 or 2005 SP2, Standard and Enterprise
- Mac OS X/Windows: MySQL 4.1.21 and 5.0.37

Note: MySQL version may vary depending on what the currently available and stable community version of the engine is available during final regression testing.

Windows

- Windows 2000 Pro/Server SP4, XP SP2, 2003 Server, or Vista
- 1 GHz or faster processor
- 512MB available RAM
- 500MB hard drive space
(Additional space required for database and asset storage)
- 1024x768 or larger display
- Network interface
- Apple QuickTime v7 or higher
- Internet Information Services (IIS) v5 or v6 (For NetPublish)
- Adobe Version Cue Server v3.1 (For Project Sync Support)
- Microsoft Office 2003 SP2 or higher (For advanced Office support)

Automatic Metadata Extraction

Portfolio makes it easy to retrieve your assets because it automatically extracts information from the file and path, as well as EXIF, IPTC, XMP, and even Microsoft Office and QuickTime. It creates powerful relationships among your assets that you wouldn't see just flipping through folders.

Self-Service Access

Stop servicing digital asset requests from other departments, clients and vendors. From dynamically updated websites to a drag-and-drop Express palette, Portfolio Server gives you a multi-channel delivery system that provides controlled, self-service access to any internal or external users.

SQL Integration

Whether your goal is to harness the power and administration ease of an existing SQL database or manage libraries in excess of 100,000 assets with greater performance and stability, you can scale-up your Portfolio Server solution as needed by adding Portfolio SQL Connect. SQL Connect supports Microsoft SQL Server 2000/2005, Oracle 10gR2 and MySQL 4 and 5 databases.

PORTFOLIO PRODUCT LINE

- Portfolio 8.5 (Client; Includes Portfolio Express)
- Portfolio Server 8.5 (Includes Project Sync for Adobe Creative Suite 3)
- Portfolio NetPublish 8.5
- Portfolio SQL Connect 8.5

North America: 1.800.796.9798
Europe: +44 (0) 1604 654 270

online www.extensis.com

Extensis
a celartem company

© 2007 Extensis, a division of Celartem, Inc. This document and the software described in it are copyrighted with all rights reserved. This document or the software described may not be copied, in whole or part, without the written consent of Extensis, except in the normal use of the software, or to make a backup copy of the software. This exception does not allow copies to be made for others. Licensed under U.S. patents issued and pending.

Extensis is a registered trademark of Extensis. The Extensis logo as well as Extensis, Portfolio, Portfolio Express, Portfolio Project Sync, Portfolio Server, Portfolio NetPublish, and Portfolio SQL Connect are all trademarks of Extensis. All other trademarks are the property of their respective owners.